

Accuracy Ratio Updates

Several changes were made to AccuracyRatio since the last printing of the User Manual. The changes made prior to and including Update 100815 are described below.

Update 090215

Guardband Analysis Worksheet

Label Changes

Labels for the **Compute** buttons have been changed to better indicate their function.

The header for the **Guardbands** section of the worksheet has been changed from "Guardbands" to "Guardbands and k-Factors."

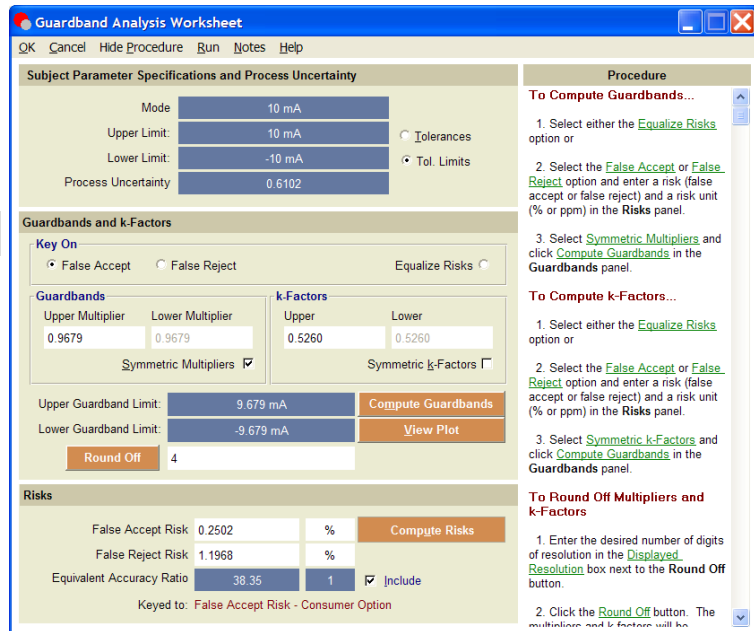
The header for the **Subject Parameter Tolerance Limits** section of the worksheet has been changed to "Subject Parameter Specifications and Process Uncertainty."

Procedure Update

Hypertext content has been changed in the instructions sidebar to match the new labels.

New Header

A **Procedure** header has been added to label the instructions sidebar.



Update 091015

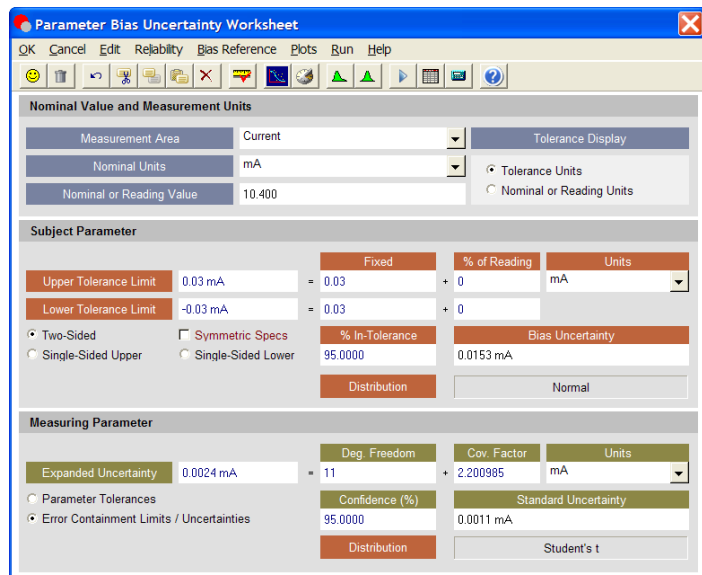
Parameter Bias Uncertainty Worksheet

The identification of both the Subject Parameter and Measuring Parameter **bias probability distributions** are now displayed on the worksheet.

Subject Parameter

The subject parameter distribution is determined in accordance with tolerancing option and percent in-tolerance:

| Condition | Distribution |
|--|--------------|
| Two-Sided Symmetric with % In-Tolerance < 100 | Normal |
| Two-Sided Symmetric with % In-Tolerance = 100 | Uniform |
| Two-Sided Asymmetric | Lognormal |
| Single-Sided with no Physical Limit | Normal |
| Single-Sided with a nonzero Physical Limit | Lognormal |
| Single-Sided with the Physical Limit = Nominal Value | Exponential |



Measuring Parameter

The measuring parameter distribution is determined as follows:

| Condition | Distribution |
|--|---------------------|
| Parameter Tolerances Option Selected | Normal |
| Error Containment Limits Option Selected and Deg Freedom = 0 | Uniform |
| Error Containment Limits Option Selected and Deg Freedom > 0 | Student's t |

Update 091115

Parameter Data Entry Worksheet

A bug that prevented estimating coverage factors for degrees of freedom greater than 190 was found and corrected. No other changes were made in this update.

Update 100815

System Information

In systems with large memory, a fatal error in opening Help About was found and corrected. Minor cosmetic changes were also made.